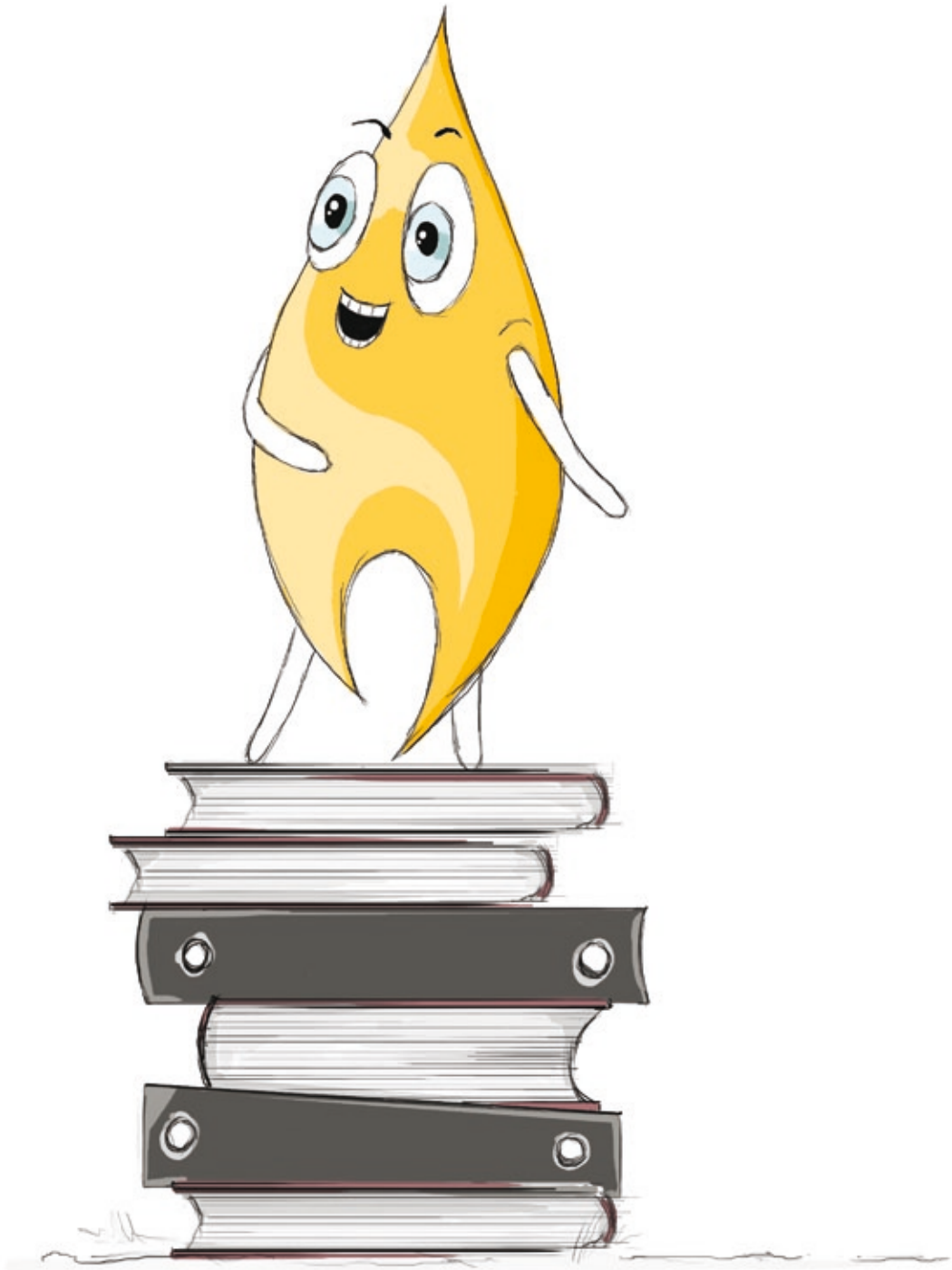


U Other information



1. Addresses of the companies of the PBG Capital Group

TABLE 1: PBG CAPITAL GROUP'S HOLDING COMPANY

Company	Address	Tel./Fax	WWW	e-mail
PBG SA	ul. Skórzewska 35, 62-081 Wysogotowo k. Poznań	(61) 665 17 00 (61) 665 17 01	www.pbg-sa.pl	polska@pbg-sa.pl

TABLE 2: DIRECT SUBSIDIARIES

Company	Address	Tel./Fax	WWW	e-mail
Hydrobudowa Polska SA	ul. Skórzewska 35, 62-081 Wysogotowo k. Poznań	(61) 664 19 50 (61) 664 19 51	www.hbp-sa.pl	polska@hbp-sa.pl
Metorex Sp. z o.o.	ul. Żwirki i Wigury, 17A, 87-100 Toruń	(56) 66 96 647 (56) 65 96 647	www.grupapbg.pl	metorex@post.pl
KWG SA	ul. Wojska Polskiego 129, 70-490 Szczecin	(91) 432 11 30 (91) 469 24 24	www.kwg.com.pl	biuro@kwg.com.pl
PBG DOM Sp. z o.o.	ul. Skórzewska 35, 62-081 Wysogotowo k. Poznań	(61) 66 41 986 (61) 661 41 960	www.pbgdom.pl	biuro@pbgdom.pl
Gas Oil Eneginerring AS	ul. Karpatská 3256/15, Poprad 058 01, Słowacja	+421 52 7144 111 +421 52 7144 140	www.gasoil.sk	gasoil@gasoil.sk
Excan Oil and Gas Engineering Ltd.	9637-45 Avenue, Edmonton Alberta T5J 3V5, Kanada	+1 780 701 7501 +1 780 430 1133	www.excan.ca	info@excan.ca
Brokam Sp. z o.o.	ul. Skórzewska 35, 62-081 Wysogotowo k. Poznań	691 470 133 (61) 66 41 981	www.grupapbg.pl	pawel.dolinski@pbg-sa.pl
Avatia Sp. z o.o.	ul. Skórzewska 35, 62-081 Wysogotowo k. Poznań	(61) 66 46 440 (61) 66 46 441	www.avatia.pl	biuro@avatia.pl
Aprivia SA	ul. Skórzewska 35, 62-081 Wysogotowo k. Poznań	(61) 66 46 426 (61) 66 46 427	www.aprivia-sa.pl	biuro@aprivia-sa.pl
PBG Technologia Sp. z o.o.	ul. Skórzewska 35, 62-081 Wysogotowo k. Poznań	(32) 779 10 00 (32) 779 10 23	www.grupapbg.pl	sekretariat@pbg-t.pl
PBG Export Sp. z o.o.	al. Słowackiego 165, 30-004 Kraków	(12) 298 41 60 (12) 298 41 69	www.grupapbg.pl	office@pbg-export.pl
PBG Ukraina	ul. Kondratiuka 1, 04-201 Kijów	(61) 665 17 00 (61) 665 17 01	www.grupapbg.pl	Brak
Wschodni Invest Sp. z o.o.	ul. Skórzewska 35, 62-081 Wysogotowo k. Poznań	(61) 665 17 00 (61) 665 17 01	www.grupapbg.pl	Brak

TABLE 3: INDIRECT SUBSIDIARIES

Company	Address	Tel./Fax	WWW	e-mail
Hydrobudowa 9 SA	ul. Skórzewska 35, 62-081 Wysogotowo k. Poznań	(61) 846 97 00 (61) 847 56 23	www.hb9.pl	sekretariat@hbp.pl
Dromost Sp. z o.o.	Żabno 2A, 63-112 Brodnica	(61) 28 23 607 (61) 28 23 639	www.dromost.pl	polska@dromost.pl
PRiD SA	ul. Poznańska 42, 64- 300 Nowy Tomyśl	(61) 44 37 600 (61) 44 37 628	www.prid.pl	sekretariat@prid.pl
Betpol SA	ul. Fordońska 168A, 85-766 Bydgoszcz	(52) 343 59 08 (52) 344 47 15	www.betpol.com.pl	betpol@betpol.com.pl
Gdyńska Projekt Sp. z o.o.	ul. Skórzewska 35, 62-081 Wysogotowo k. Poznań	(61) 846 97 00 (61) 847 56 23	www.grupapbg.pl	sekretariat@hbp.pl
P.R.G. Metro Sp. z o.o.	ul. Wólczyńska 163, 01-919 Warszawa	(22) 864 57 50 (22) 864 57 52	www.prgmetro.pl	info@prgmetro.pl
Górecka Projekt Sp. z o.o.	ul. Skórzewska 35, 62-081 Wysogotowo k. Poznań	(61) 66 41 986 (61) 661 41 960	www.grupapbg.pl	biuro@pbgdom.pl
Apartamenty Poznańskie Sp. z o.o.	ul. Skórzewska 35, 62-081 Wysogotowo k. Poznań	(61) 66 41 986 (61) 661 41 960	www.grupapbg.pl	biuro@pbgdom.pl
PBG DOM Invest I Sp. z o.o.	ul. Skórzewska 35, 62-081 Wysogotowo k. Poznań	(61) 66 41 986 (61) 661 41 960	www.grupapbg.pl	biuro@pbgdom.pl
PBG DOM Invest II Sp. z o.o.	ul. Skórzewska 35, 62-081 Wysogotowo k. Poznań	(61) 66 41 986 (61) 661 41 960	www.grupapbg.pl	biuro@pbgdom.pl
PBG DOM Invest III Sp. z o.o.	ul. Skórzewska 35, 62-081 Wysogotowo k. Poznań	(61) 66 41 986 (61) 661 41 960	www.grupapbg.pl	biuro@pbgdom.pl
PBG DOM Invest IV Sp. z o.o.	ul. Skórzewska 35, 62-081 Wysogotowo k. Poznań	(61) 66 41 986 (61) 661 41 960	www.grupapbg.pl	biuro@pbgdom.pl
PBG DOM Invest V Sp. z o.o.	ul. Skórzewska 35, 62-081 Wysogotowo k. Poznań	(61) 66 41 986 (61) 661 41 960	www.grupapbg.pl	biuro@pbgdom.pl
PBG DOM Invest III Sp. z o.o. sp. k.	ul. Skórzewska 35, 62-081 Wysogotowo k. Poznań	(61) 66 41 986 (61) 661 41 960	www.grupapbg.pl	biuro@pbgdom.pl
Złotowska 51 Sp. z o.o.	ul. Skórzewska 35, 62-081 Wysogotowo k. Poznań	(61) 66 41 986 (61) 661 41 960	www.grupapbg.pl	biuro@pbgdom.pl
Quadro House Sp. z o.o.	ul. Skórzewska 35, 62-081 Wysogotowo k. Poznań	(61) 66 41 986 (61) 661 41 960	www.grupapbg.pl	biuro@pbgdom.pl
City Development Sp. z o.o.	ul. Skórzewska 35, 62-081 Wysogotowo k. Poznań	(61) 66 41 986 (61) 661 41 960	www.grupapbg.pl	biuro@pbgdom.pl
KINO Development Sp. z o.o.	ul. Skórzewska 35, 62-081 Wysogotowo k. Poznań	(61) 66 41 986 (61) 661 41 960	www.grupapbg.pl	biuro@pbgdom.pl
Villa Poznań Sp. z o.o.	ul. Skórzewska 35, 62-081 Wysogotowo k. Poznań	(61) 66 41 986 (61) 661 41 960	www.grupapbg.pl	biuro@pbgdom.pl

TABLE 4: ASSOCIATED COMPANY

Company	Address	Tel./Fax	WWW	e-mail
Energomontaż Południe SA	ul. Mickiewicza 15, 40-951 Katowice	(32) 200 82 34 (32) 258 65 22	www.energomontaz.pl	info@energomontaz.pl

Branches of direct subsidiaries:

Hydrobudowa Polska SA branches:

Włocławek branch, ul. Płocka 164, 87-800 Włocławek

Śląsk branch, ul. Żwirki i Wigury 58, 43-190 Miko

2. Glossary

Acquisition - Expenditure for the purchase of a company or share in a company

Bearer shares - Shares that are assigned to the particular person

Consortium - Agreement of two or more companies in order to execute common undertaking

Corporate Governance - Rules for the responsible management and control of companies that are set forth in "Good practices of companies listed on the Warsaw Stock Exchange"

CSR - Corporate Social Responsibility

Depreciation - The value that must be earned each year in order to cover expenses for replacement investments at the end of an asset's useful life

EBIT - Earnings before interests and taxes, or operating profit

EBITDA - Earnings before interests, taxes, depreciation and amortization, or operating profit before depreciation and amortization

EBITDA margin - EBITDA/Revenues

EPS - EBITDA/Revenues

Free float company - Publicly traded corporation with a majority share of free float

IAS - International Accounting Standards

IFRS - International Financial Reporting Standards

Net debt - Net sum of long- and short-term credit and loans and bonds less balance of cash and cash equivalents

P/E ratio - Price/earnings ratio; an indicator for the market valuation of stock

ROA - Return on Assets

ROE - Return on Equity

Stock option - Form of compensation that gives management and employees the right to purchase stock in their company at certain conditions if specific goals are reached

3. Financial calendar

Consolidated quarterly reports with abridged individual quarterly financial statements:

- ✂ Q1 FY 2010: 10th May 2010
- ✂ Q3 FY 2010: 15th November 2010

Consolidated semi-annual report with abridged individual semi-annual financial statements:

- ✂ H1 FY 2010: 31st August 2010

Annual General Meeting:

- ✂ 21st April 2010

4. Five-year review

TABLE 5: PBG CAPITAL GROUP

Years		2005	2006	2007	2008	2009
Revenues	in PLN thous.	498,539	674,337	1,406,976	2,091,425	2,577,980
EBITDA ¹	in PLN thous.	50,165	88,525	166,056	268,718	333,618
EBITDA margin	in %	10%	13%	12%	13%	13%
EBIT	in PLN thous.	41,331	71,957	139,335	223,573	286,496
EBIT margin	in %	8%	11%	10%	11%	11%
Profit before tax	in PLN thous.	45,337	69,919	146,376	213,877	262,628
Net profit:	in PLN thous.	36,947	54,912	119,679	187,254	222,040
- parent company	in PLN thous.	36,076	52,181	104,308	156,331	210,625
- minority shareholders	in PLN thous.	871	2,731	15,371	30,923	11,414
Net debt ²	in PLN thous.	133,483	222,337	190,130	499,247	435,463
ROE ³	in %	20,31%	14,21%	13,90%	16,85%	15,09%
ROA ⁴	in %	5,41%	4,99%	4,62%	5,50%	5,25%
Employees at year-end		1,084	2,265	3,570	3,908	3,722

TABLE 6: STOCK EXCHANGE

Years		2005	2006	2007	2008	2009
EPS	in PLN	3,43	4,34	7,77	11,64	15,11
Equity of the shareholder of the Holding Company per share	in PLN	16,87	30,52	55,90	69,06	97,60
Share price at year-end	in PLN	73,62	255,38	286,10	196,00	203,20
Number of shares at year-end	in thous.	10,530	12,030	13,430	13,430	14,295
Market capitalization at year-end	in PLN thous.	775,219	3,072,221	3,842,323	2,632,280	2,904,744

¹ EBIT + Amortization

² (Long- and short-term credit and loans + bonds) – balance of cash and cash equivalents

³ Net profit/Equity of the shareholder of the Holding Company

⁴ Net profit/Assets total

TABLE 7: BALANCE SHEET

Years		2005	2006	2007	2008	2009
Fixed assets	in PLN thous.	201,200	373,649	717,926	901,603	1,011,530
Current assets	in PLN thous.	465,070	671,402	1,540,909	1,939,362	2,996,816
Equity of the shareholder of the Holding Company	in PLN thous.	177,637	367,173	750,670	927,504	1,395,305
Short-term liabilities	in PLN thous.	79,352	70,330	50,033	112,850	101,877
Long-term liabilities	in PLN thous.	135,948	203,317	350,402	475,147	493,867
Balance sheet total	in PLN thous.	666,270	1,045,051	2,258,835	2,840,965	4,008,345